

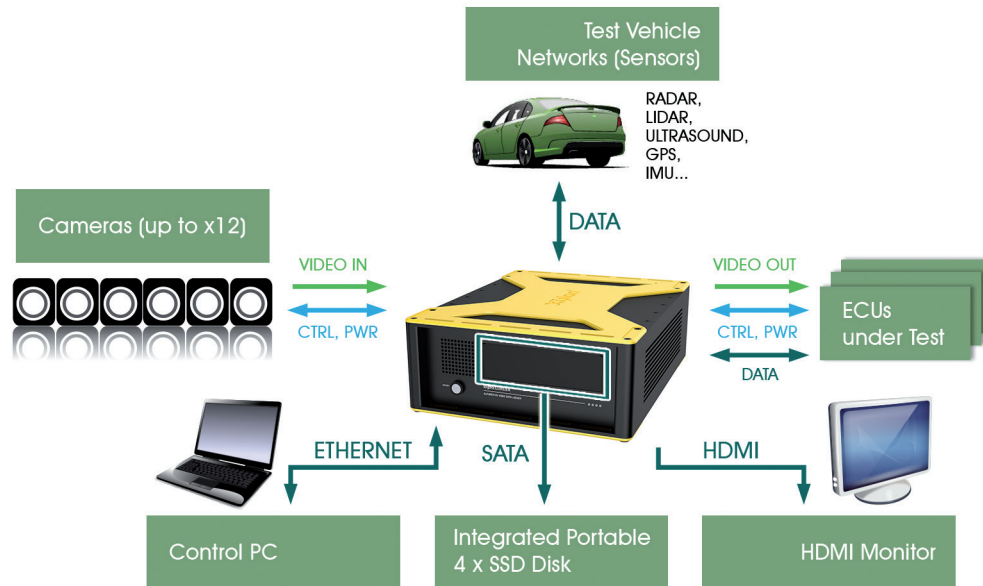
logiRECORDER 3.1 Automotive Video Data Logger

RECORD + PLAYBACK + ANALYSIS



- Synchronous recording of up to 12x video channels and >20x network channels
- Stack multiple units into one logger with more video and network channels
- Synchronous video and networks data playback for Hardware-In-the-Loop (HIL) simulations
- FPGA-based modular design for flexible interfacing, including customer-made modules
- Any automotive video interface, including next generation TI® FPD Link-III, Maxim Integrated™ GMSL...
- Dedicated 4x 1GbE smart Ethernet channels with the high-throughput local processing
- Support for logging and analysis of the industry leading smart digital cameras
- 2x 10GbE Ethernet channels integrated for future HIL expansion ports
- Vehicle networks: BroadR-Reach®, Ethernet, CAN, LIN, FlexRay, UART, DIG I/O, GPS...
- Video and data recordings are stored with a central timestamp
- GPS PPS hardware time synchronization across multiple stacked or remote data loggers
- Intuitive dashboard application controls HW configuration, recording and playback
- Software development kit (SDK) for customer logging applications
- Test-fleet installations can be controlled through 4G mobile networks
- Standard and event-triggered recording of video and data before and after the trigger
- Triggers and filters can be setup as signals and messages from the vehicle databases
- Data logged in the industry most popular data log formats: ROS, ASC, PCAP, MDF4...
- Currently supported vehicle databases: CAN XML DBC, LIN LDF, FlexRay FIBEX
- Four (4) portable SSD Disks (2-32 TB combined) enable hours of recordings
- Standard file system with support for large files
- A single box (350x281x110 mm) device with a very low power consumption
- Rugged housing withstands use over a wide temperature and vibration range

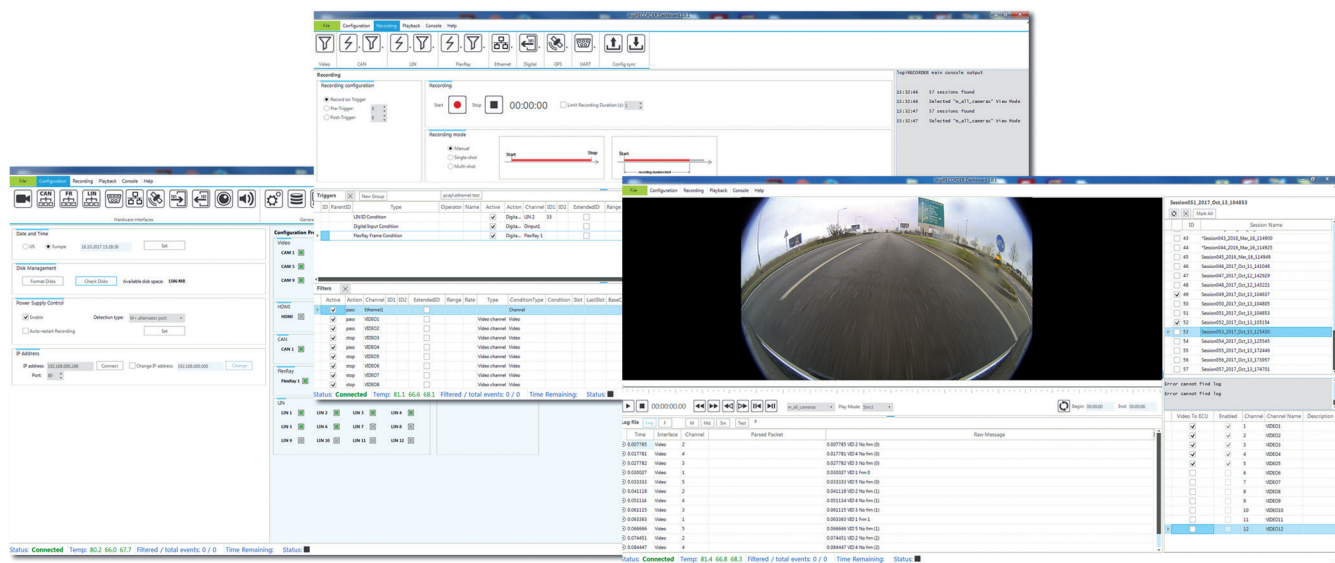
logiRECORDER System Connections



* Stack multiple logiRECORDER units to expand data logging capabilities

logiRECORDER Dashboard

The dashboard PC application enables hardware configuration, setup of advanced triggers and filters for continuous and event-triggered recordings, parallel playback of video and network data, recorded data manipulation and offline analysis. The dashboard enables remote controls through WiFi and 4G mobile networks.



Xylon Headquarters

Xylon d.o.o.
Fallorovo šetalište 22
10 000 Zagreb, Croatia - Europe

tel: +385-1-368-0026
E-mail: info@logicBRICKS.com

Xylon Germany

Uhlandstr. 19
D-49525
Lengerich/Westf., Germany - Europe

tel: +49-5481-327-937
E-mail: info@logicBRICKS.de

Xylon Japan

Meiji-Yasuda, Seimei Meidaimae Bldg. 4F
2-41-11 Matsubara, Setagaya-Ku
156-0043 Tokyo, Japan

E-mail:
info@logicBRICKS.jp

Xylon USA

West Bloomfield, MI
USA

tel: +1 248-770-8640
na-sales@logicBRICKS.com