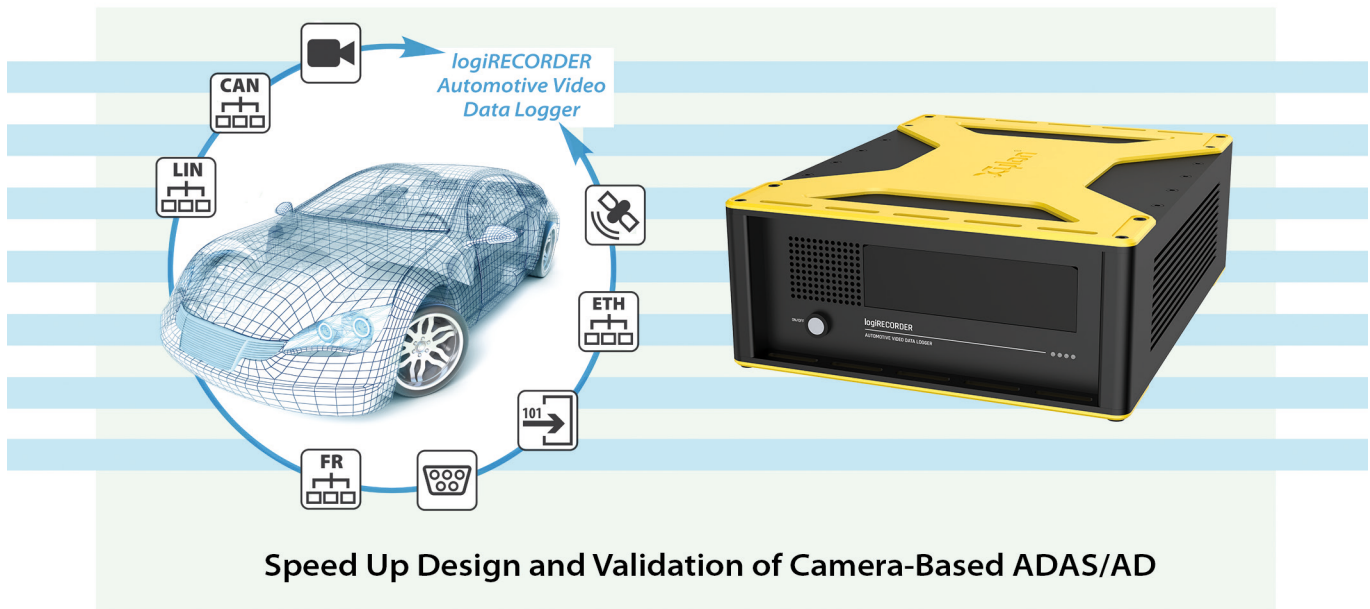


logiRECORDER 3.0 Automotive Video Data Logger

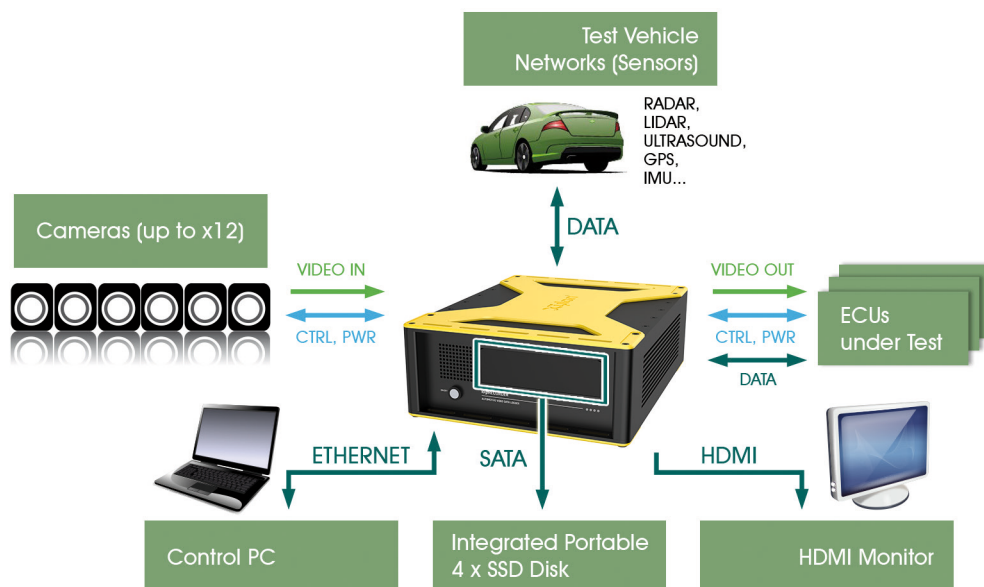
Brings Vehicle Camera System to Your Desk!



Speed Up Design and Validation of Camera-Based ADAS/AD

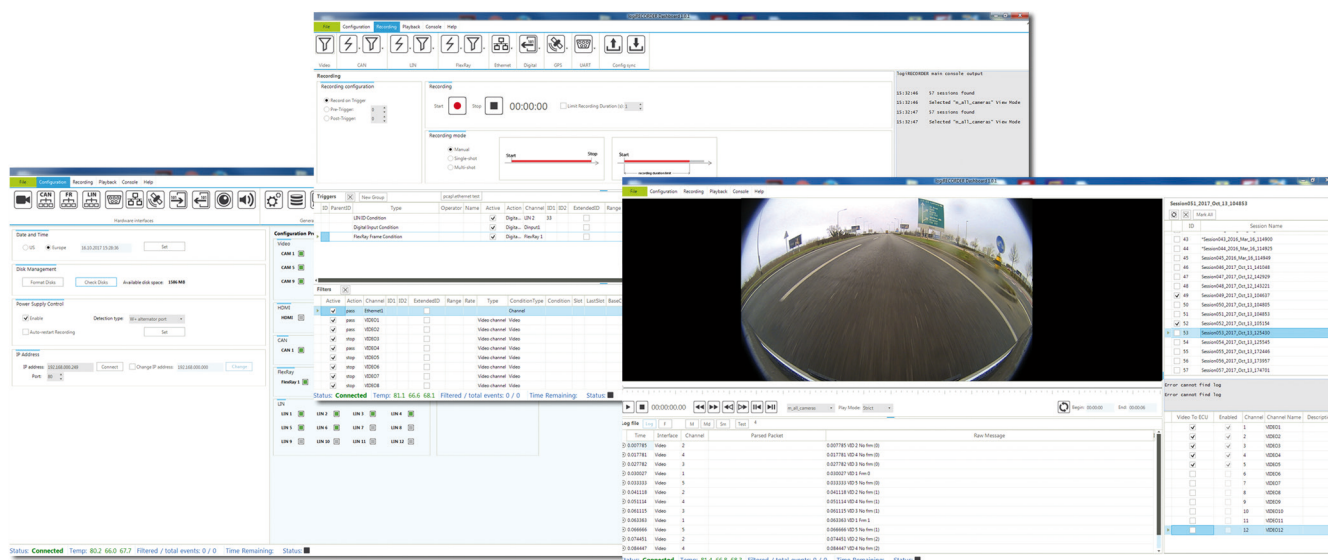
- Synchronous recording of up to 12x video channels and >20x network channels
- Synchronous video and networks data playback for Hardware-In-the-Loop (HIL) simulations
- Modular design for flexible interfacing, including customer-made modules
- Any automotive video interface, including TI® FPD Link-III, Maxim Integrated™ GMSL, Ethernet...
- Vehicle networks: BroadR-Reach®, Ethernet, CAN, LIN, FlexRay, UART, WLAN, DIG I/O, GPS...
- Video and data recordings are stored with a central timestamp
- Intuitive dashboard application controls HW configuration, recording and playback
- Standard and event-triggered recording of video and data before and after the trigger
- Triggers and filters can be setup as signals and messages from the vehicle databases
- Currently supported vehicle databases: CAN XML DBC, LIN LDF, FlexRay FIBEX
- Four (4) portable SSD Disks (FAT32, 2-8 TB combined) enable hours of recordings
- Small and rugged housing, and a very low power consumption

logiRECORDER System Connections



logiRECORDER Dashboard

The dashboard PC application enables hardware configuration, setup of advanced triggers and filters for continuous and event-triggered recordings, parallel playback of selected video and network data, and recorded data manipulation and analysis.



Xylon Headquarters

Xylon d.o.o.
Fallerovo šetalište 22
10 000 Zagreb, Croatia - Europe

tel: +385-1-368-0026
E-mail: info@logicBRICKS.com

Xylon Germany

Uhlandstr. 19
D-49525
Lengerich/Westf., Germany - Europe

tel: +49-5481-327-937
E-mail: info@logicBRICKS.de

Xylon Japan

Meiji-Yasuda, Seimei Meidaimae Bldg. 4F
2-41-11 Matsubara, Setagaya-Ku
156-0043 Tokyo, Japan

E-mail: info@logicBRICKS.jp